



PEPA-F™

Pathogen Eliminating Particulate Air Filter

**For Heating, Ventilation & Air Conditioning
(HVAC) Systems**

Effects of the global COVID-19 pandemic on public transport

Changing safety requirements for passengers :

Social distancing difficult in crowded public transport

Existing air filtration in HVAC systems too basic for protecting passengers against covid-19

Far-reaching financial impact for operators :

Dramatic decline in passenger numbers

Loss in revenues, e.g. reduced ticket sales

Increased operational efforts, e.g. cleaning needs, upgrade vehicles with additional safety measures

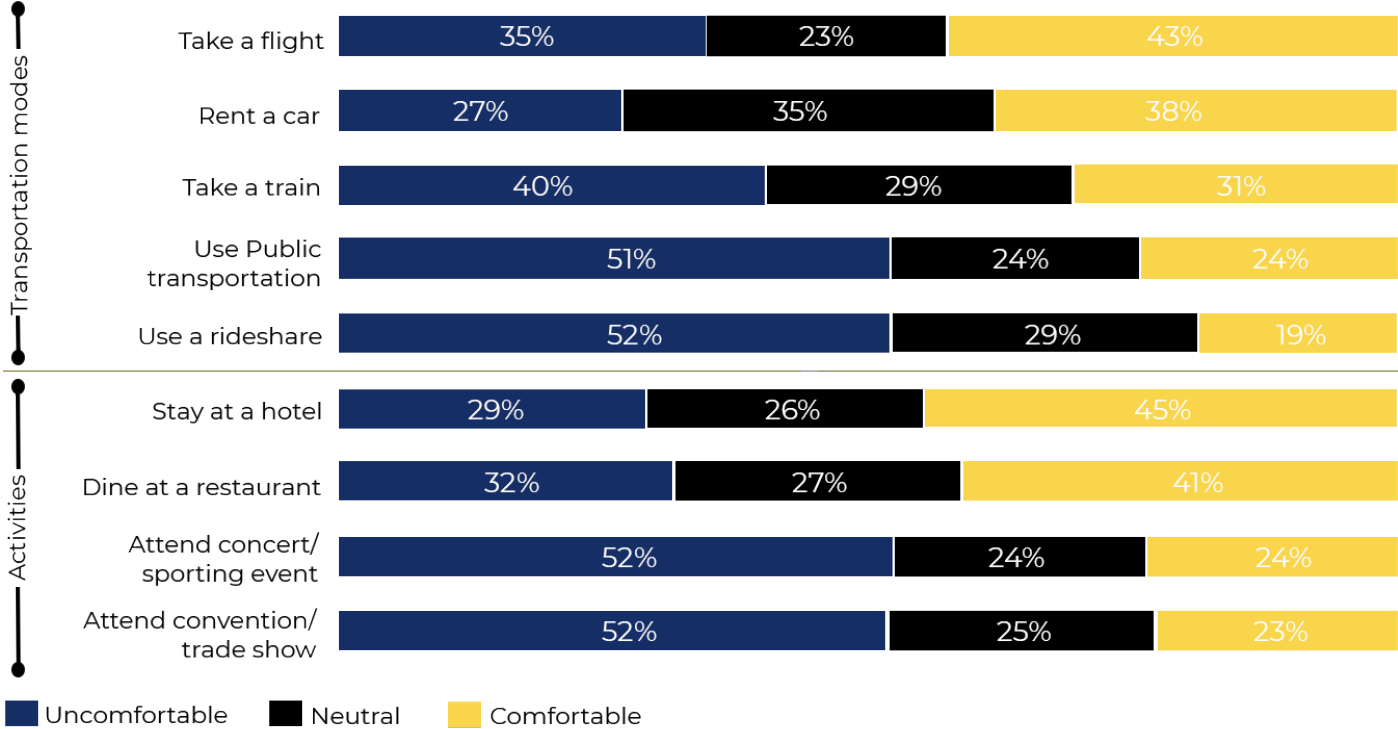


© AIRCONCO LTD



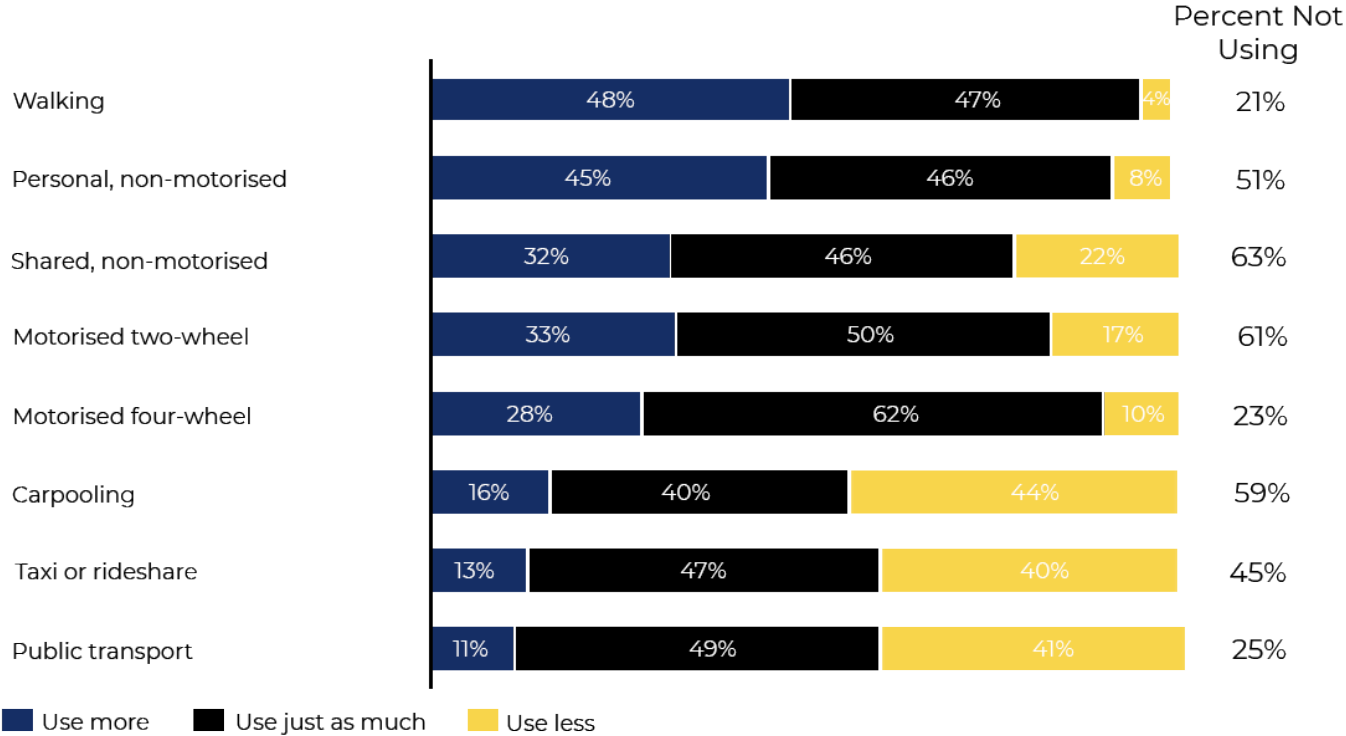
Effects of the global COVID-19 pandemic on public transport

After Covid-19 outbreak ends and travel restrictions are lifted, how comfortable will you feel doing each of these activities?



Effects of the global COVID-19 pandemic on public transport

When the pandemic ends, which means of transport do you plan on using for your daily or weekly commute to your workplace or place of study within 2 hours of home?



Effects of the global COVID-19 pandemic on public transport

Transportation sector must regain trust

Boosting passengers confidence in public and mass transport

Avoiding shift to other modes of transport has an increased
priority again

Fostering long-term healthy alternative to congested and polluted
cities

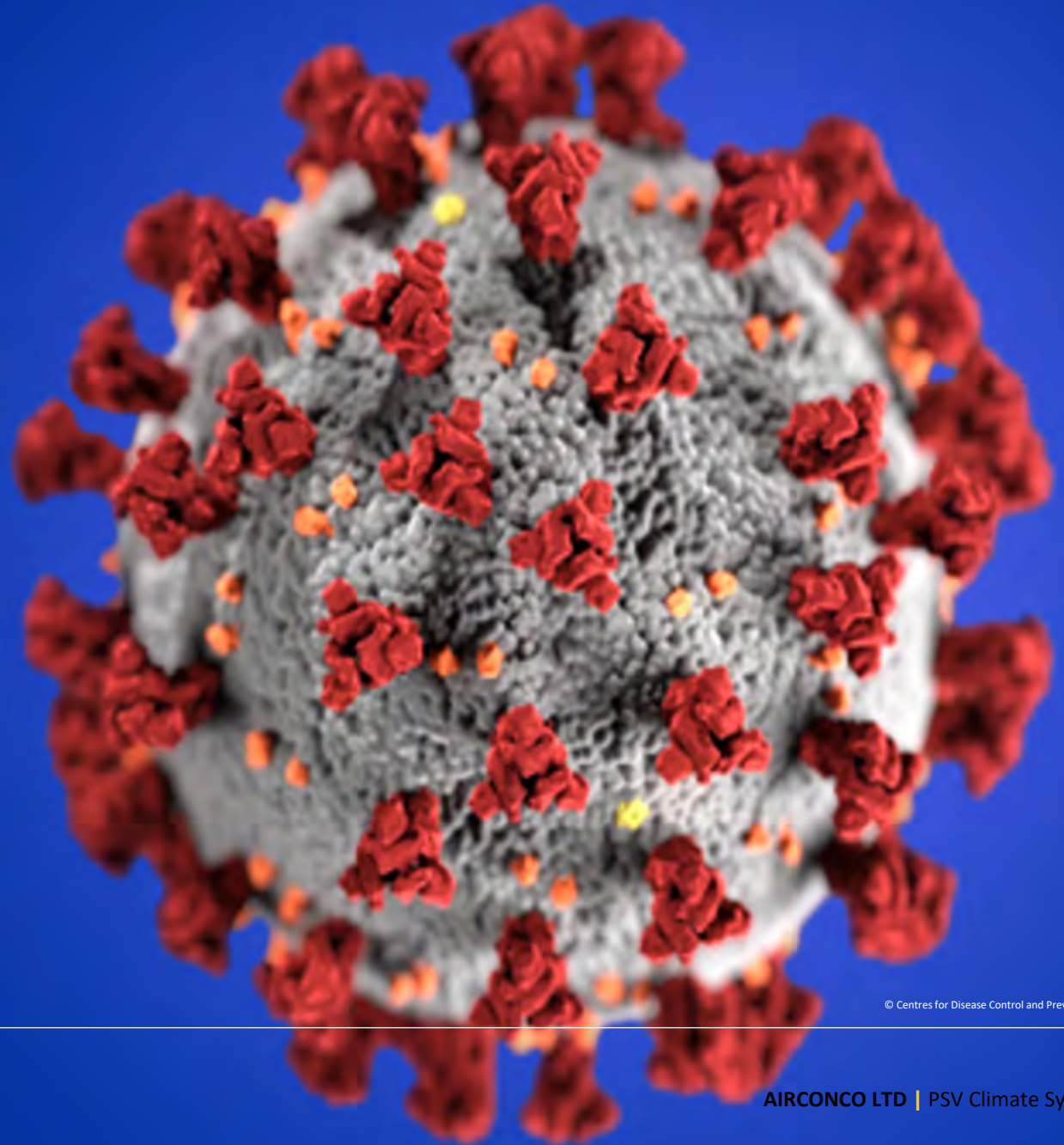
Ensuring the health and safety of operations and maintenance
staff



© AIRCONCO LTD



The aerosol transmission of the coronavirus is particularly concerning in closed, crowded locations with inadequately ventilated spaces.



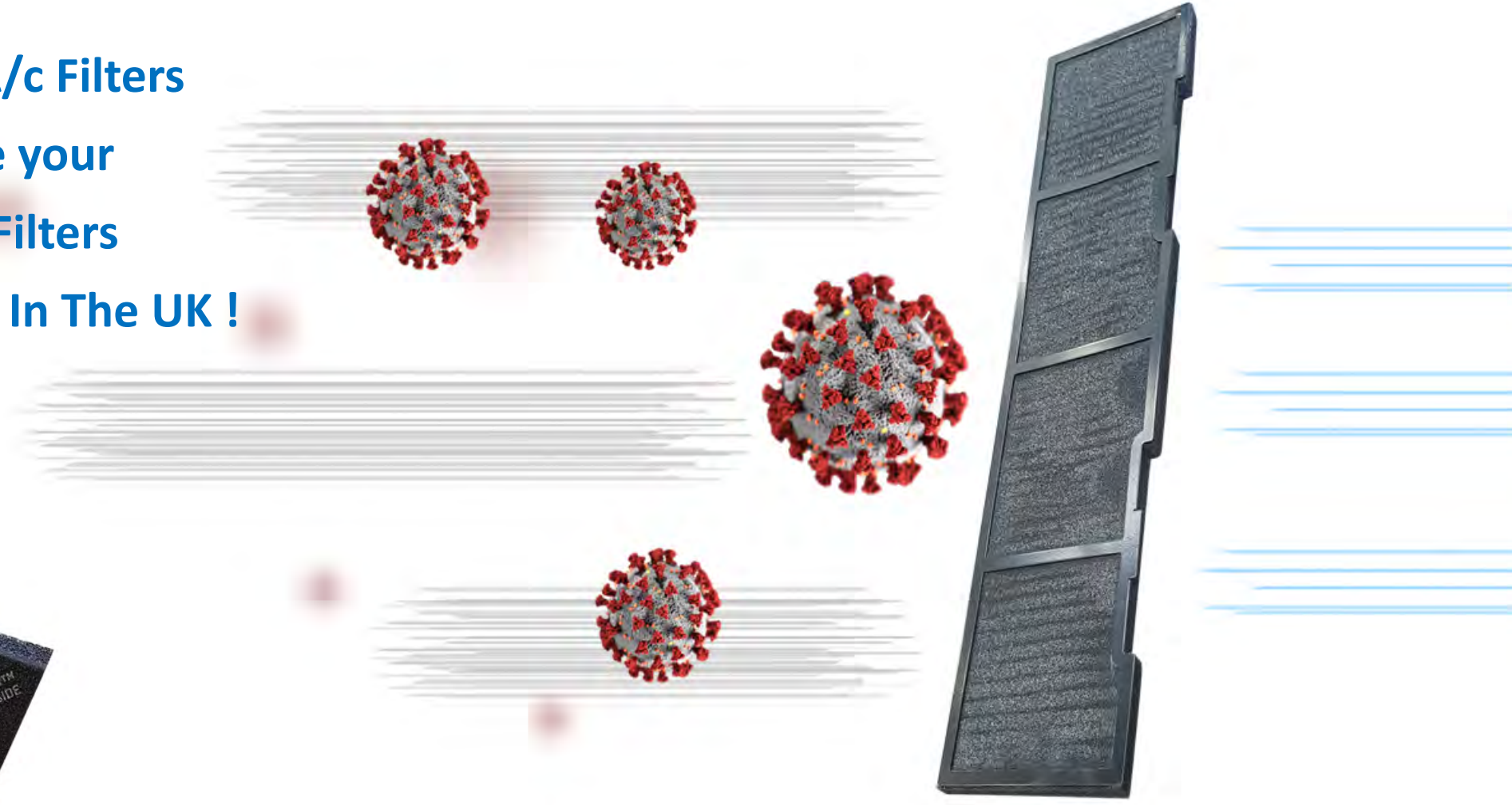
© Centres for Disease Control and Prevention



COVID-19 Drop In A/c Filters

Designed to replace your
existing A/c Pollen Filters

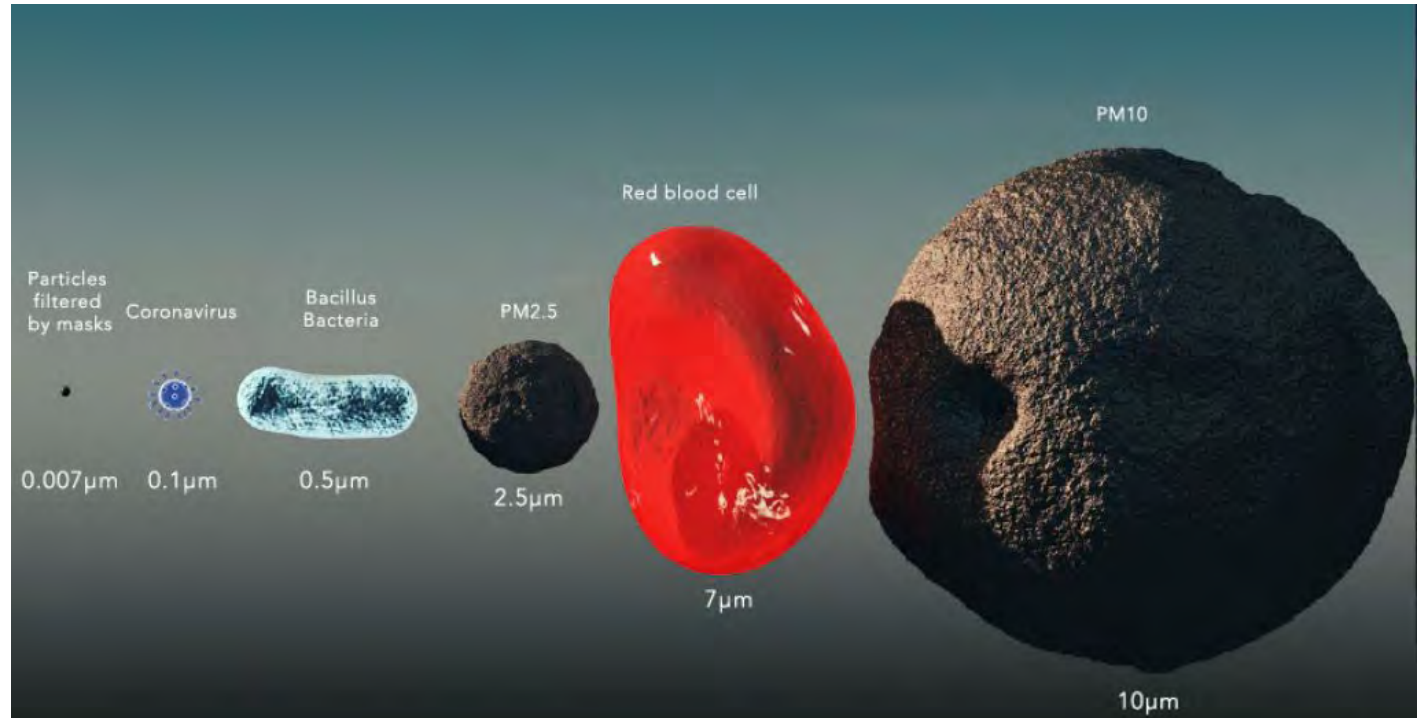
Developed & Made In The UK !



Coronavirus virion size in comparison

The very small size of the coronavirus presents a challenge to modern technology

The coronavirus spreads primarily through droplets when an infected person coughs or sneezes

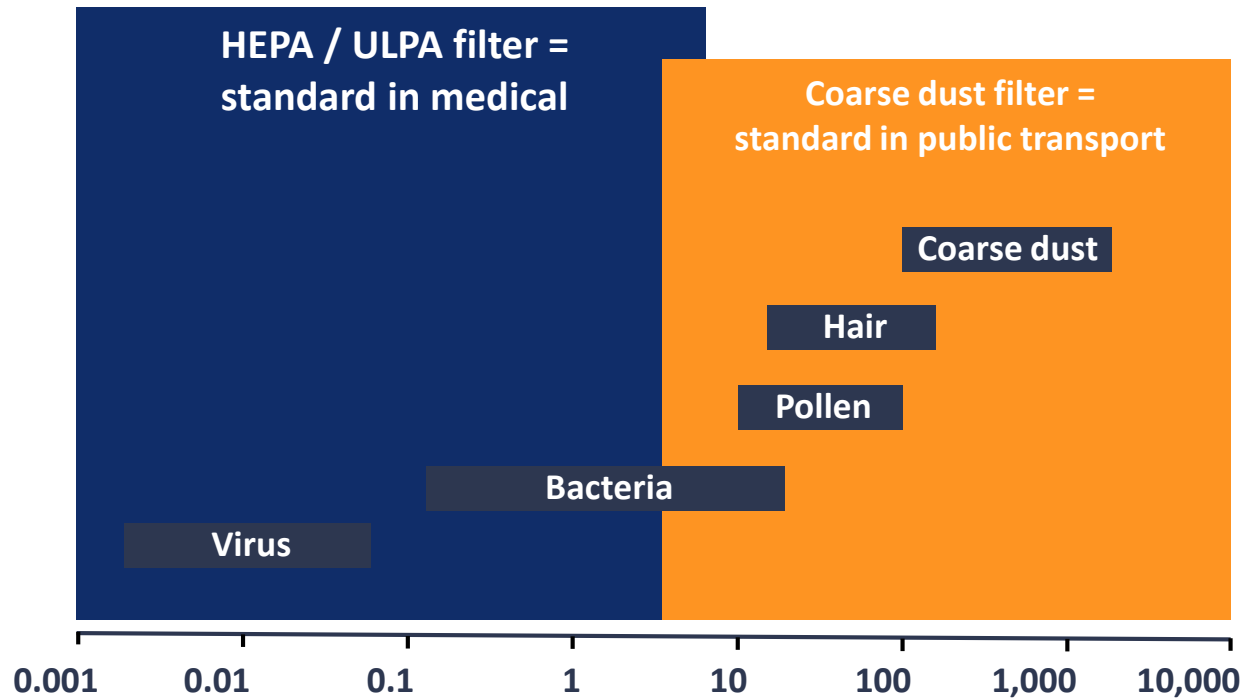


Source: <https://abcdust.net/how-large-is-a-corona-virus-virion-compared-to-the-mp10-2-5/>



Air filtration Systems

Existing filter systems do not reduce the risk for passengers nor staff in public transportation



Coarse dust filter
do not capture viruses nor their carriers

HEPA / ULPA filters
capture viruses (with their carriers) but are not suitable for transportation

- air pressure drop too high
- changing frequency too high

Filtering out droplets from the air in public transport requires new solutions



PEPA-F™

Pathogen Eliminating Particulate Air Filter

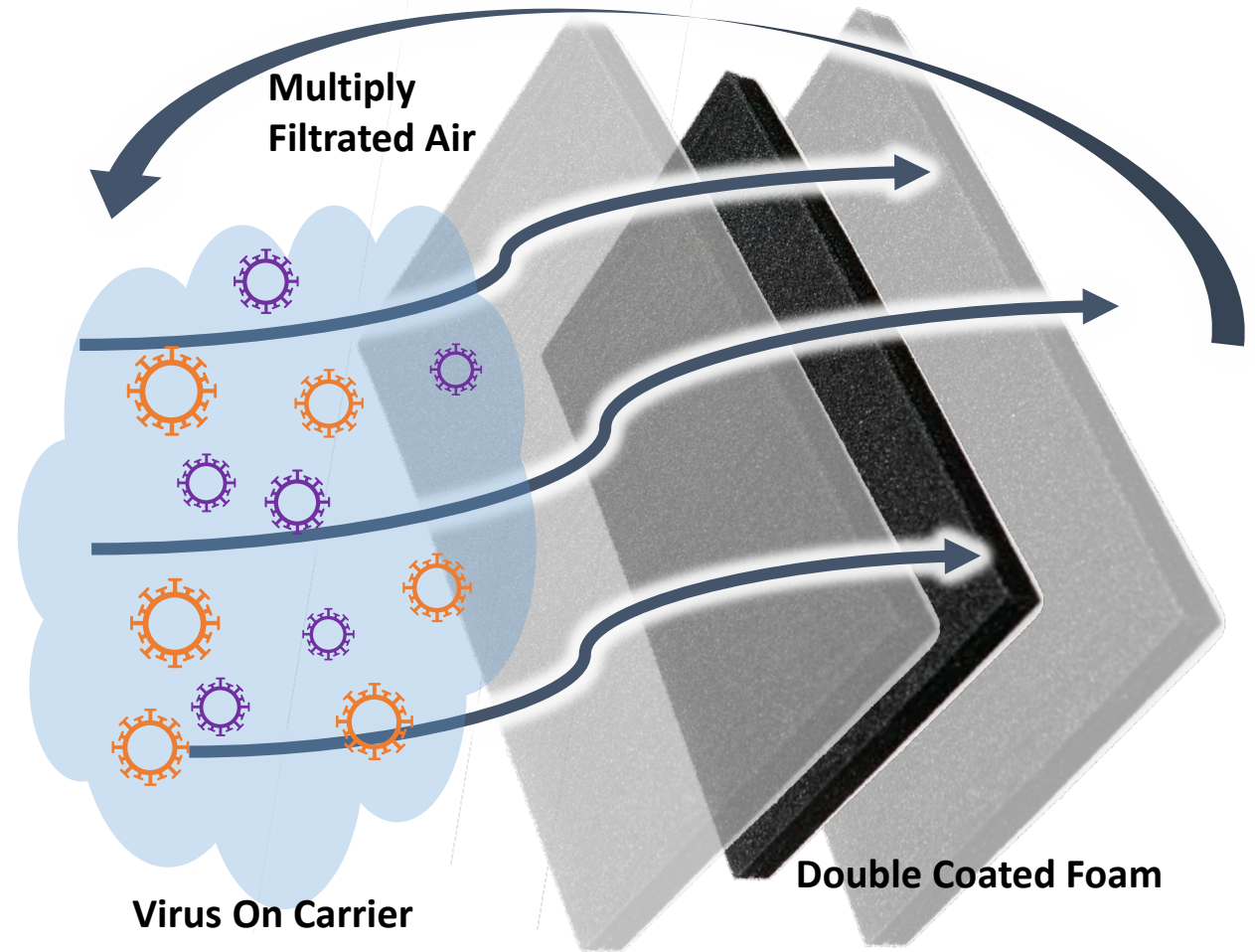
How is the filter composed?

- ❑ It is a dual or triple laminated foam filter with double coating prefilter for larger particles & inner layer for finer particles.
- ❑ Second silver impregnation cured into the filter for coronavirus elimination.

How does the filter work?

A two-step approach

1. Capture the carrier, e.g. water, dust, aerosol, of the coronavirus
2. Kills the virus thanks to registered silver technology formula, not allowing it to pass through the A/c system





**Immediately
Available Solution**

99.99%

**Effective Against
SARS-CoV-2 (Covid-19)**



PEPA-F™

Key Features

- Drop In - Same Dimensions of Existing Filter
- Life Span - Same as Original Filter
- 100% Safe - Virus is killed, not contained in the filter
- No Air Pressure Drop - Designed to Keep Your A/c Performance High



PEPA-F™

10 min

Quick installation time per HVAC

up to 6 months

Changing interval is up to five times longer compared to basic filters

0 training hours

Required as same changing process as for basic filters (accept recommendation for PPE)

100%

Safe for maintenance personnel when installing / changing the filter as virus gets killed, not just blocked



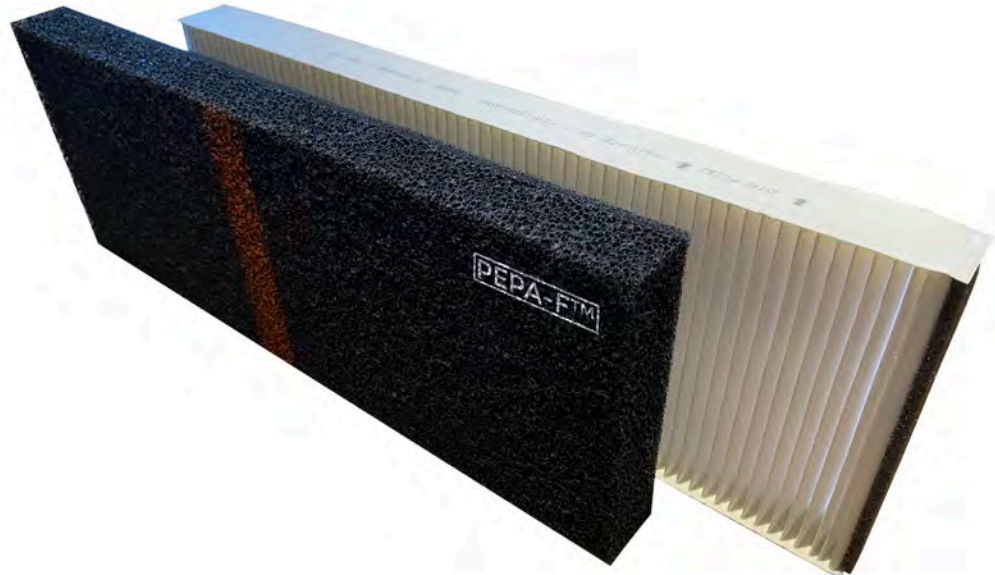
For safe and easy installation, a red stripe identifies the antiviral impregnated filter.



PEPA-F™

Available From:

Airconco Dealer Network



DEALER NETWORK

- 1 Airconco Ltd**
T: +44(0)1706 399 322, E: service@airconcoltd.com
- 2 AC Automotive Ltd**
T: +44(0)7816 889 904, E: service@ac-automotive.co.uk
- 3 AD Coach Systems Ltd**
T: +44(0)1782 520 103, E: sales@adcoachsystems.co.uk
- 4 Autokool Central Ltd**
T: +44(0)7770 732 325, E: autokoolac@hotmail.com
- 5 Automotive Technical**
T: +44(0)7808 020 333, W: www.automotivetechnical.co.uk
- 6 City Circle Ltd**
T: +44(0)20 8573 3294, W: www.citycircle.com
- 7 ClimaCare Group Ltd**
T: +44(0) 7542 252 664, E: barry@climacaregroup.co.uk
- 8 Cabin Climate Control Ltd**
T: +44(0) 7725 252 402, E: cabinclimatecontrol@gmail.com
- 9 Elite Coachworks Ltd**
T: +44(0) 1482 873 835, W: www.elitecoachworks.co.uk
- 10 Harrison's Vehicle Air Conditioning Ltd**
T: +44(0)7812 607 592, E: steveharrison30@hotmail.com
- 11 Hickleys Ltd**
T: +44(0)1823 328 600, W: www.hickleys.com
- 12 Kempair Ltd**
T: +44(0)7740 198 117, E: kempair2002@gmail.com
- 13 Longhurst Refrigeration Ltd**
T: +44(0)800 313 4228, W: www.longhurstrefrigeration.co.uk
- 14 Lifting and Cooling Ltd**
T: +44(0)191 377 9777, W: www.liftingandcooling.com
- 15 SNJ Auto Electrics Ltd**
T: +44(0)7729 221 394, E: snjautoelectrics@gmail.com
- 16 Supreme Air Ltd**
T: +44(0) 7929 258 548, E: supreme-air@outlook.com
- 17 Thermocooling Services Ltd**
T: +44(0)7795 402 401, E: chill@thermocooling.co.uk

www.airconcoltd.com/dealers

Airconco
PSV CLIMATE SYSTEMS

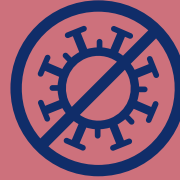
For Warranty Requests Please Call 01706 399 322 and select Option 1

Need to find your nearest dealer?
Our dealer locator site can provide you with all the info you need to locate the support closest to you.





Immediate Availability



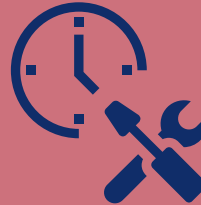
**Kills The Virus –
Not Contained In Filter**



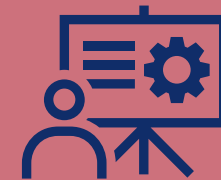
Safety Ensured



No Air Pressure Drop



**Drop In – Same Size Of
Original Filter**



No Additional Training



The image shows two buses parked side-by-side. The bus on the left is white with a black roof and has 'e.City Gold' written on its side. The bus on the right is gold and black. Both buses have large windows and modern designs. In the background, there is a building with large windows and a blue sky with some clouds.

Filters available for the a/c systems for the following vehicles:

**Beulas, Caetano, Irizar, Jonckheere, MAN Turliner, Mercedes Turismo, Plaxton, Scania Interlink /OmniExpress / Touring, Setra, Sunsundegui, Vanhool, Volvo & VDL.
Application list work in progress, so call with your requirements.**

Thank You